



**India Meteorological Department  
(Ministry of Earth Sciences)**

**NATIONAL BULLETIN NO. 3 (AS/02/2023)**

**TIME OF ISSUE: 2015 HOURS IST**

**DATED: 30.09.2022**

**FROM: INDIA METEOROLOGICAL DEPARTMENT (FAX NO. 24643965/24699216/24623220)**

**TO: CONTROL ROOM, NDM, MINISTRY OF HOME AFFAIRS (FAX.NO. 23093750)**

**CONTROL ROOM NDMA (FAX.NO. 26701729)**

**CABINET SECRETARIAT (FAX.NO.23012284, 23018638)**

**PS TO HON'BLE MINISTER FOR S & T AND EARTH SCIENCES (FAX NO.23316745)**

**SECRETARY, MOES (FAX NO. 24629777)**

**H.Q. (INTEGRATED DEFENCE STAFF AND CDS) (FAX NO. 23005137/23005147)**

**DIRECTOR GENERAL, DOORDARSHAN (23385843)**

**DIRECTOR GENERAL, AIR (23421105, 23421219)**

**PIB MOES (FAX NO. 23389042)**

**UNI (FAX NO. 23355841)**

**D.G. NATIONAL DISASTER RESPONSE FORCE (NDRF) (FAX NO. 26105912, 2436 3260)**

**DIRECTOR, PUNCTUALITY, INDIAN RAILWAYS (FAX NO. 23388503)**

**CHIEF SECRETARY, KERALA (FAX NO. 0471-2327176)**

**ADMINISTRATOR, LAKSHADWEEP ISLANDS (FAX NO. 0413-262184)**

**CHIEF SECRETARY, GOA (FAX NO. 0832-2415201)**

**CHIEF SECRETARY, KARNATAKA (FAX NO. 080-22258913)**

**CHIEF SECRETARY, MAHARASHTRA (FAX NO. 022- 22028594)**

**CHIEF SECRETARY, GUJARAT (FAX NO. 079-23250305)**

**CHIEF SECRETARY, DAMAN & DIU (FAX NO. 0260-2230775)**

**CHIEF SECRETARY, DADRA & NAGAR HAVELI (FAX NO. 0260-2645466)**

**CHIEF SECRETARY, ODISHA (FAX NO. 0674-2536660)**

**CHIEF SECRETARY, WEST BENGAL (FAX NO. 033-22144328)**

**CHIEF SECRETARY, CHHATTISGARH (FAX NO. 0771-2221206)**

**CHIEF SECRETARY, JHARKHAND (FAX NO. 0651-2400255)**

**CHIEF SECRETARY, BIHAR (FAX NO. 0612-2217085)**

**Sub: A) Depression over Eastcentral Arabian Sea close to south Konkan coast**

**B) Well marked low pressure area over coastal West Bengal and adjoining areas of North coastal Odisha & Northwest Bay of Bengal**

**A) Depression over Eastcentral Arabian Sea close to south Konkan coast**

The depression over Eastcentral Arabian Sea off south Konkan-Goa coasts moved north-northeastwards with a speed of 6 kmph during past 6 hours and lay centered at 1730 hours IST of today, the 30<sup>th</sup> September, 2023 over Eastcentral Arabian Sea close to south Konkan coast, near latitude 16.6°N and longitude 73.2°E, about 40 km south-southwest of Ratnagiri (Maharashtra), 90 km north-northwest of Vengrula (Maharashtra) and 140 km north-northwest of Panjim (Goa).

It is likely to move northeastwards and cross Konkan-Goa coasts between Panjim and Ratnagiri by tonight.

**Spatial rainfall distribution: Isolated: <25%, A few: 26-50%, Many: 51-75%, Most: 76-100%**

**Rainfall amount (mm): Heavy rain: 64.5 – 115.5, Very heavy rain: 115.6 – 204.4, Extremely heavy rain: 204.5 or more.**

**Warnings:**

**(i) Rainfall (warning graphics enclosed)**

**South Konkan-Goa:**

Light/moderate rainfall at most places with heavy to very heavy rainfall at a few places and extremely heavy rainfall at isolated places is very likely on 30<sup>th</sup> September and 1<sup>st</sup> October, 2023.

**North Konkan:**

Light/moderate rainfall at most places with heavy rainfall at isolated places is very likely on 30<sup>th</sup> September and 1<sup>st</sup> October, 2023.

**Costal Karnataka:**

Light/moderate rainfall at most places with heavy to very heavy rainfall at isolated places on 30<sup>th</sup> September and isolated heavy rainfall on 1<sup>st</sup> October, 2023.

**South Madhya Maharashtra:**

Light/moderate rainfall at most places with heavy to very heavy rainfall at isolated places on 30<sup>th</sup> September and 1<sup>st</sup> October, 2023.

**Kerala:**

Light/moderate rainfall at most places with heavy to very heavy rainfall at isolated places on 30<sup>th</sup> September, 2023.

**(ii) Wind warning:**

**Squally wind speed reaching 45-55 kmph gusting to 65 kmph** over Eastcentral Arabian Sea along & off Maharashtra-Goa-Karnataka coasts is likely prevail during next 24 hours.

**(iii) Sea condition**

**Rough to very rough sea condition is very likely** over Eastcentral Arabian Sea along & off Maharashtra-Goa-Karnataka coasts on 30<sup>th</sup> September and 1<sup>st</sup> October, 2023.

**(iv) Fishermen Warning (warning graphics enclosed)**

Fishermen are advised not to venture into Eastcentral Arabian Sea along & off Maharashtra-Goa-Karnataka coasts on 30<sup>th</sup> September and 1<sup>st</sup> October, 2023.

**B) Well marked low pressure area over coastal West Bengal and adjoining areas of North coastal Odisha & Northwest Bay of Bengal**

The Well Marked Low Pressure Area over Northwest Bay of Bengal moved west-northwestwards and lay centered over coastal West Bengal and adjoining areas of North coastal Odisha & Northwest Bay of Bengal at 1730 hours IST of today, the 30<sup>th</sup> September, 2023. It is likely to move further west-northwestwards across Gangetic West Bengal and adjoining north Odisha & Jharkhand during next 12 hours.

**Spatial rainfall distribution: Isolated: <25%, A few: 26-50%, Many: 51-75%, Most: 76-100%**

**Rainfall amount (mm): Heavy rain: 64.5 – 115.5, Very heavy rain: 115.6 – 204.4, Extremely heavy rain: 204.5 or more.**

**Warnings:**

**(i) Rainfall (warning graphics enclosed)**

**30<sup>th</sup> September:**

Light/moderate rainfall at most places with heavy to very heavy rainfall at isolated places is very likely over West Bengal & Sikkim, North Odisha, Bihar and Jharkhand.

**01<sup>st</sup> October:**

Light/moderate rainfall at most places with heavy to very heavy rainfall at isolated places is very likely over North Odisha, North Chhattisgarh, Bihar, Jharkhand and Sub-Himalayan West Bengal & Sikkim; isolated heavy rainfall over Gangetic West Bengal.

**2<sup>nd</sup> October:**

Light/moderate rainfall at most places with heavy to very heavy rainfall at isolated places is likely over North Odisha, Bihar, Jharkhand, Sub-Himalayan west Bengal & Sikkim; isolated heavy rainfall over Gangetic West Bengal.

**(ii) Wind warning:**

**Squally wind speed reaching 40-50 kmph gusting to 60 kmph** is prevailing and likely over North Bay of Bengal along & off North Odisha -West Bengal and adjoining Bangladesh coasts till evening of 1<sup>st</sup> October.

**(iii) Sea condition**

**Rough sea condition is very likely** over North Bay of Bengal along & off North Odisha - West Bengal and adjoining Bangladesh coasts till evening of 1<sup>st</sup> October, 2023.

**(iv) Fishermen Warning (warning graphics enclosed)**

Fishermen are advised not to venture into North Bay of Bengal along & off North Odisha - West Bengal and adjoining Bangladesh coasts till 1<sup>st</sup> October, 2023.

**The system is under continuous surveillance and the next message will be issued at 0230 hours IST of tomorrow, the 1<sup>st</sup> October, 2023.**

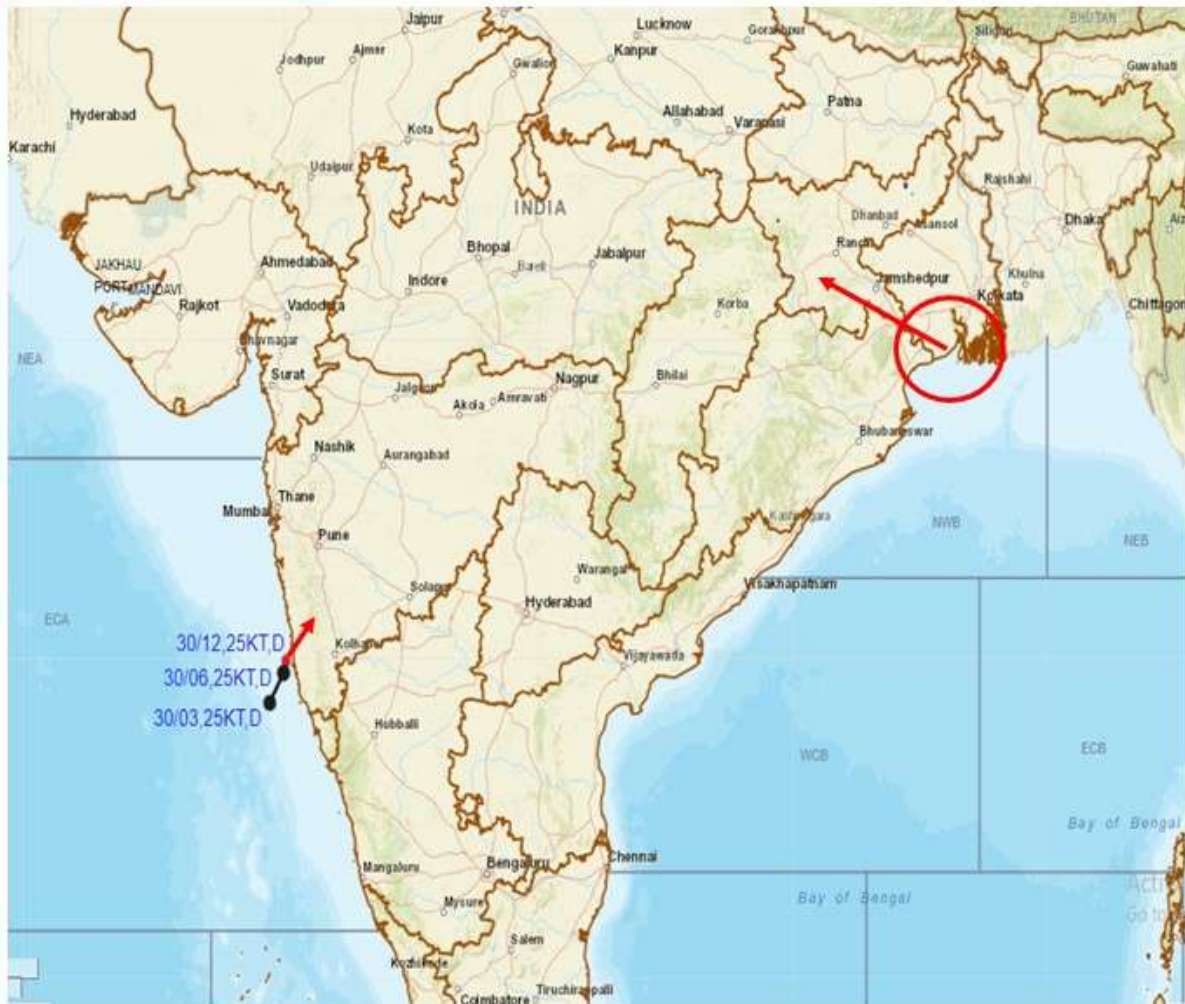
**(Ananda Kumar Das)  
Scientist F, Cyclone Warning, New Delhi**

*Copy to: ACWC Mumbai/ACWC Kolkata/ ACWC Chennai/CWC Ahmedbad/ CWC Bhubaneswar/CWC Visakhapatnam/ CWC Thiruvanthapuram*

**Spatial rainfall distribution: Isolated: <25%, A few: 26-50%, Many: 51-75%, Most: 76-100%**  
**Rainfall amount (mm): Heavy rain: 64.5 – 115.5, Very heavy rain: 115.6 – 204.4, Extremely heavy rain: 204.5 or more.**



**OBSERVED AND FORECAST TRACK OF DEPRESSION OVER EASTCENTRAL ARABIAN SEA AND LOCATION OF WELL MARKED LOW PRESSURE AREA OVER COASTAL WEST BENGAL AND ADJOINING AREA BASED ON 1200 UTC (1730 IST) OF 30<sup>TH</sup> SEPTEMBER, 2023.**

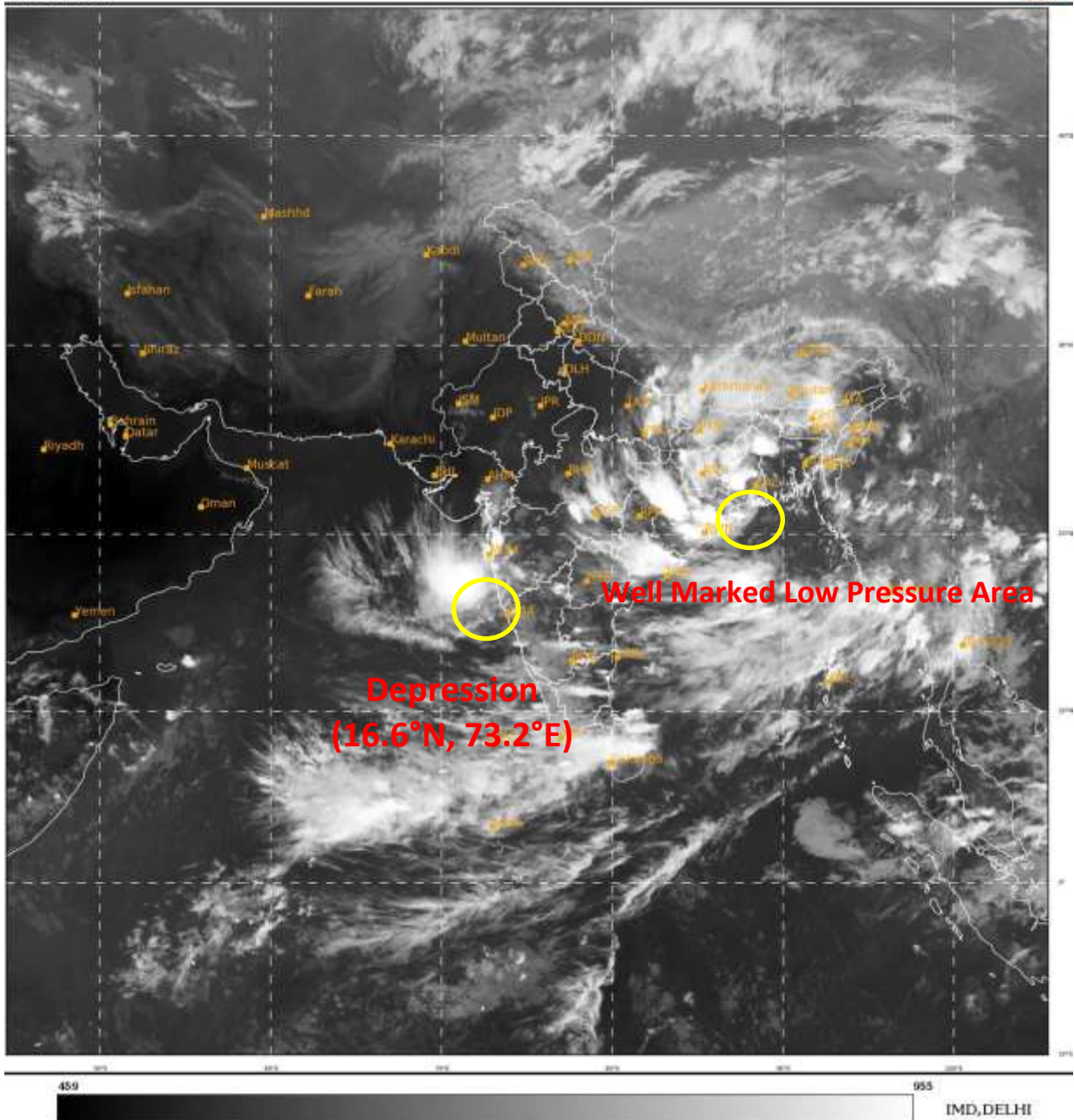


DATE/TIME IN UTC  
 IST=UTC + 0530  
 L: LOW PRESSURE AREA  
 WML: WELL MARKED LOW PRESSURE AREA  
 D: DEPRESSION (17-27 KT)  
 DD: DEEP DEPRESSION (28-33 KT)  
 CS: CYCLONIC STORM (34-47 KT)  
 SCS: SEVERE CYCLONIC STORM (48-63KT)  
 VSCS: VERY SEVERE CYCLONIC STORM (64-89 KT)  
 ESCS: EXTREMELY SEVERE CYCLONIC STORM (90-119 KT)  
 SuCS: SUPER CYCLONIC STORM (≥ 120 KT)

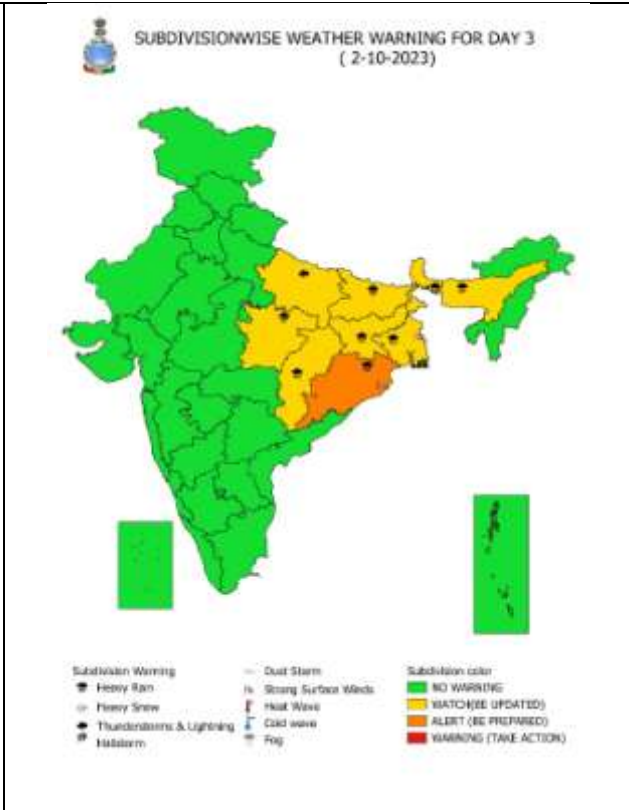
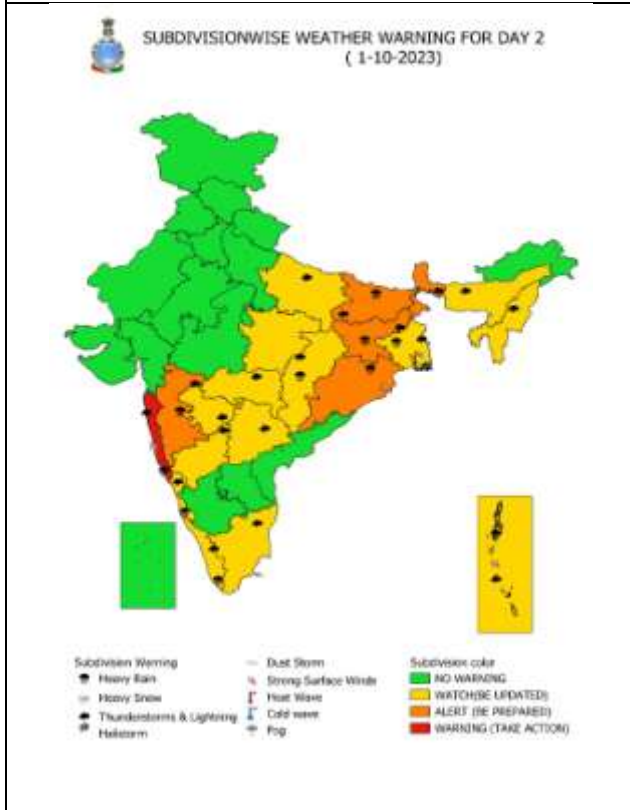
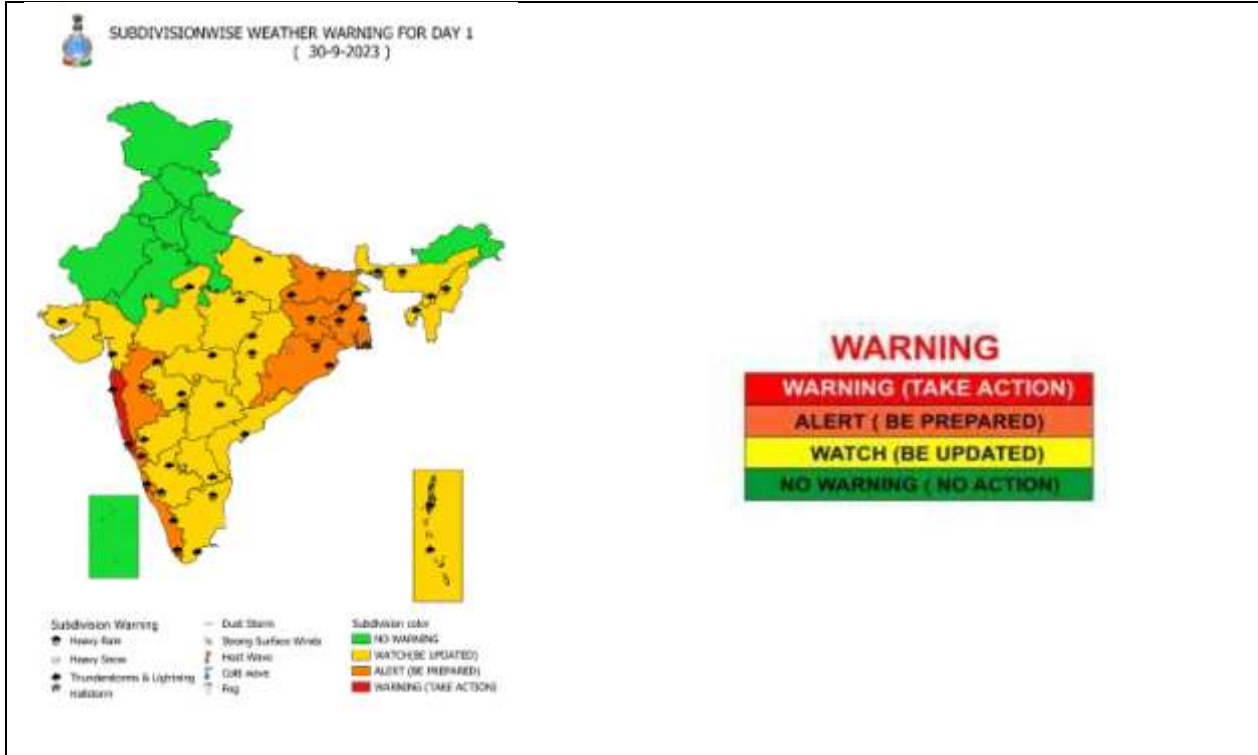
- LESS THAN 34 KT
- ⊙ 34-47 KT
- ⊙ ≥ 48 KT
- OBSERVED TRACK
- FORECAST TRACK
- ▲ CONE OF UNCERTAINTY

Spatial rainfall distribution: Isolated: <25%, A few: 26-50%, Many: 51-75%, Most: 76-100%  
 Rainfall amount (mm): Heavy rain: 64.5 – 115.5, Very heavy rain: 115.6 – 204.4, Extremely heavy rain: 204.5 or more.

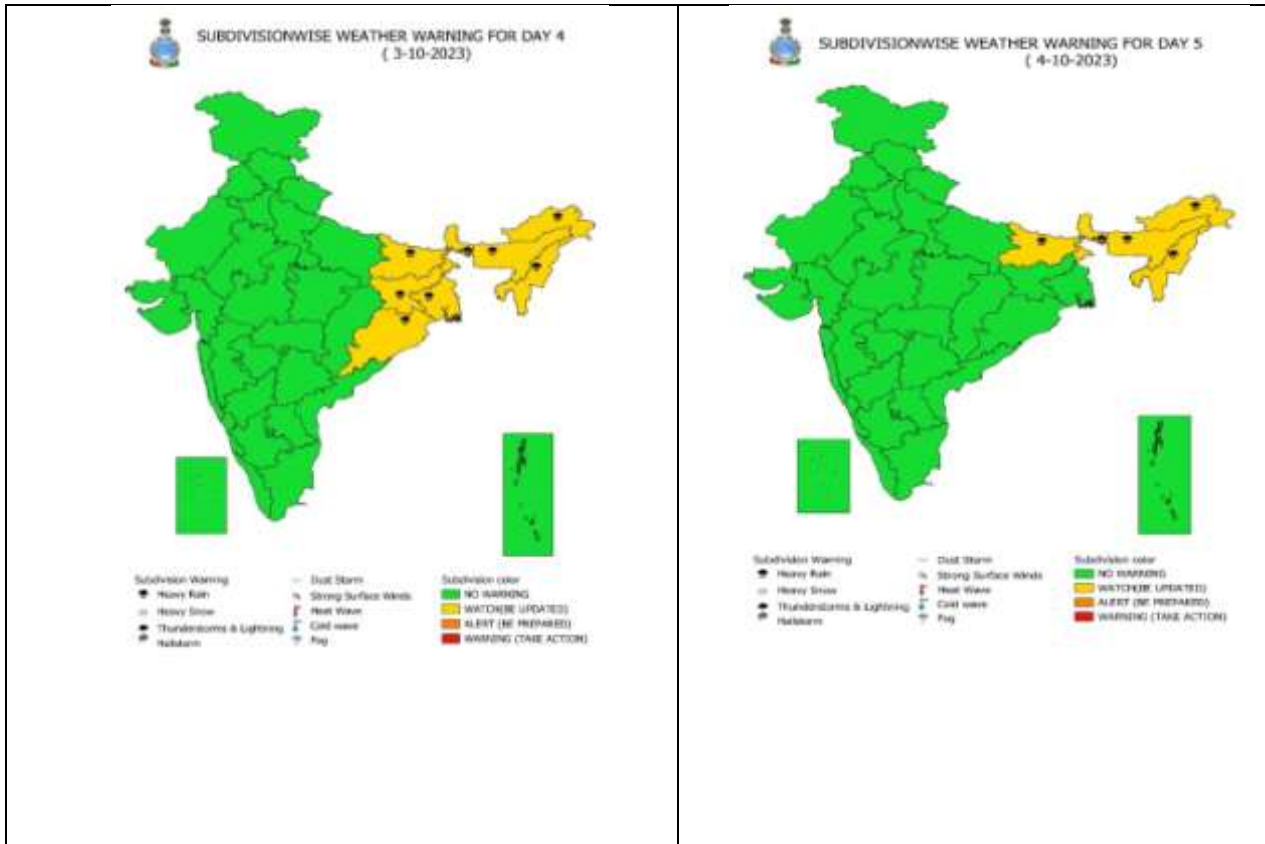




**Spatial rainfall distribution: Isolated: <25%, A few: 26-50%, Many: 51-75%, Most: 76-100%**  
**Rainfall amount (mm): Heavy rain: 64.5 – 115.5, Very heavy rain: 115.6 – 204.4, Extremely heavy rain: 204.5 or more.**



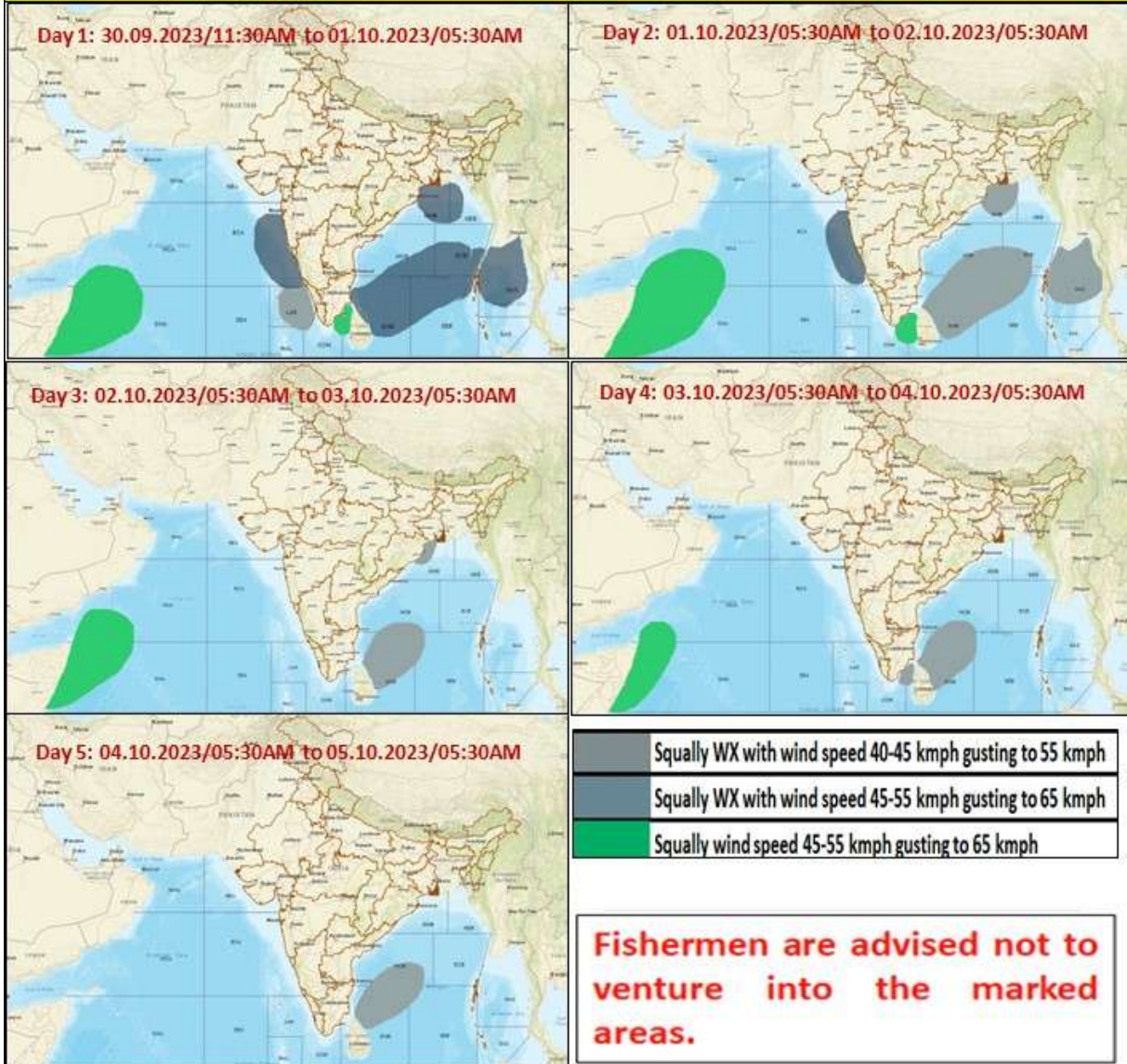
**Spatial rainfall distribution: Isolated: <25%, A few: 26-50%, Many: 51-75%, Most: 76-100%**  
**Rainfall amount (mm): Heavy rain: 64.5 – 115.5, Very heavy rain: 115.6 – 204.4, Extremely heavy rain: 204.5 or more.**



**Spatial rainfall distribution: Isolated: <25%, A few: 26-50%, Many: 51-75%, Most: 76-100%**  
**Rainfall amount (mm): Heavy rain: 64.5 – 115.5, Very heavy rain: 115.6 – 204.4, Extremely heavy rain: 204.5 or more.**



## Fishermen warning graphics



**Spatial rainfall distribution: Isolated: <25%, A few: 26-50%, Many: 51-75%, Most: 76-100%**

**Rainfall amount (mm): Heavy rain: 64.5 – 115.5, Very heavy rain: 115.6 – 204.4, Extremely heavy rain: 204.5 or more.**